

Fondazione Edmund Mach (FEM)

gis.cri.fmach.it



WHO WE ARE

The Fondazione Edmund Mach (FEM) is a private research foundation established by the government of the Autonomous Province of Trento. The GIS and Remote Sensing Unit is part of the Research and Innovation Centre (FEM-CRI), Biodiversity and Molecular Ecology Department. The mission of the Department is to combine ground-breaking statistical analyses and spatial and temporal modelling to greatly improve our understanding of how and why changes in presence and distribution of many species (including animals, plants and micro-organisms) occur.

WHAT OUR EXPERIENCE IS

The mission of the GIS and Remote Sensing Unit at Fondazione Edmund Mach is to develop and provide multi-scale approaches for the description of biological systems and processes. Core activities are the acquisition, processing and validation of field, geographical and remote sensing data, the support for the scientific analysis and management of physical, ecological and geographical data, collected in research projects or monitoring activities.

WHAT WE DO IN EU BON

The Fondazione Edmund Mach will mainly deal with:

- » analysing remote sensing and species diversity data by developing cutting-edge analytical techniques, among them univariate regression models with locally weighted methods such as geographically weighted regression or local smoothing surfaces, generalized additive models and partial least square regression, and neural networks for predicting species richness and abundance;
- » linking environmental data to biodiversity: developing analytical and modelling tools.

IN EU BON WE MAINLY CONTRIBUTE TO

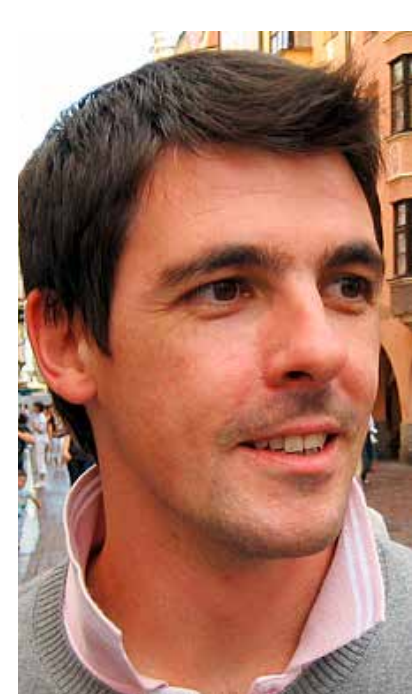
- WP3** Improving tools and methods for data analysis and interface
- WP 4** Link environment to biodiversity: analyses of patterns, processes and trends



WE ARE ALSO INVOLVED IN

- » Edenext
- » Eurowestnile
- » ICT COST Action TD1202 Mapping and the citizen sensor

Dr. Duccio Rocchini



- » Researcher at Fondazione Edmund Mach
- » Research activity: spatial ecological modelling and remote sensing, in particular remote sensing applied to biodiversity estimate

Dr. Markus Neteler



- » Coordinator of the GIS-Remote Sensing unit at Fondazione Edmund Mach
- » Research interests: remote sensing for environmental risk assessment and Free Software GIS development